

April  
2021



*Final*

## **Description of the Proposed Action and Alternatives**

for the Environmental Assessment  
Addressing Construction and Operation of Re-Entry  
Vehicle Integration Laboratory Facilities at Kirtland Air  
Force Base, New Mexico

*United States Air Force  
Air Force Materiel Command  
Air Force Research Laboratory*



## ACRONYMS AND ABBREVIATIONS

ABW	Air Base Wing
AFB	Air Force Base
AFGSC	Air Force Global Strike Command
AFMC	Air Force Materiel Command
AFRL	Air Force Research Laboratory
CFR	Code of Federal Regulations
DOD	Department of Defense
DOE	Department of Energy
DOPAA	Description of the Proposed Action and Alternatives
DU	depleted uranium
EA	Environmental Assessment
EIS	Environmental Impact Statement
EO	Executive Order
ESA	Endangered Species Act
FY	fiscal year
HE	high explosive
JTA	Joint Test Assembly
LEEED	Low Energy Electro-Explosive Device
LSA	low specific activity
MBTA	Migratory Bird Treaty Act
NELA	Nuclear Explosive Like Assemblies
NEPA	National Environmental Policy Act
NEW	net explosive weight
NHPA	National Historic Preservation Act
NOA	Notice of Availability
REVIL	Re-Entry Vehicle Integration Laboratory
SHPO	State Historic Preservation Officer
THPO	Tribal Historic Preservation Officer
USAF	United States Air Force
USFWS	United States Fish and Wildlife Service
UXO	unexploded ordnance

## COVER SHEET

### FINAL DESCRIPTION OF THE PROPOSED ACTION AND ALTERNATIVES FOR THE ENVIRONMENTAL ASSESSMENT ADDRESSING CONSTRUCTION AND OPERATION OF RE-ENTRY VEHICLE INTEGRATION LABORATORY FACILITIES AT KIRTLAND AIR FORCE BASE, NEW MEXICO

**Responsible Agencies:** United States Air Force (USAF), Air Force Materiel Command (AFMC), and Air Force Research Laboratory (AFRL)

**Affected Location:** Kirtland Air Force Base (AFB), New Mexico

**Report Designation:** Final Description of the Proposed Action and Alternatives (DOPAA)

**Abstract:** This DOPAA was developed in compliance with USAF's *Environmental Impact Analysis Process* in support of construction and operation of Re-Entry Vehicle Integration Laboratory (REVIL) facilities for AFRL at Kirtland AFB, New Mexico. The REVIL would provide nuclear research; development, test, and evaluation system integration; capabilities for new USAF nuclear programs; and leverage existing cross directorate AFRL and Department of Energy (DOE) facilities. It would support Department of Defense (DOD) and DOE mission partners through nuclear system design and integration capabilities and perform design, integration, packaging, and assembly activities on development, qualification, and certification test units. The proposed action would construct secure facilities totaling up to 12,000 square feet consisting of an Operating Facility, Radiographic Test Facility, and Storage Facility. The Storage Facility is proposed to be located within the 750 Igloo Area, which is northeast of the proposed Operating and Radiographic Testing facilities.

AFRL does not have adequate secured facilities to meet current and future threats to the nuclear capabilities in the United States. Because of this, AFRL is undergoing rapid programmatic, funding, and manning increases to meet growing demands for nuclear research, development, test, and evaluation investments.

***THIS PAGE INTENTIONALLY LEFT BLANK.***

## TABLE OF CONTENTS

Acronyms and Abbreviations.....	Inside Front Cover
<b>1.0 PURPOSE AND NEED FOR ACTION .....</b>	<b>1-1</b>
<b>1.1 INTRODUCTION .....</b>	<b>1-1</b>
<b>1.2 PURPOSE OF THE PROPOSED ACTION.....</b>	<b>1-1</b>
<b>1.3 NEED FOR THE PROPOSED ACTION.....</b>	<b>1-1</b>
<b>1.4 DECISION TO BE MADE .....</b>	<b>1-3</b>
<b>1.5 INTERGOVERNMENTAL COORDINATION / CONSULTATIONS.....</b>	<b>1-3</b>
1.5.1 Interagency and Intergovernmental Coordination and Consultations ....	1-3
1.5.2 Government to Government Coordination and Consultations.....	1-3
<b>1.6 PUBLIC AND AGENCY REVIEW OF DRAFT EA.....</b>	<b>1-4</b>
<b>2.0 DESCRIPTION OF THE PROPOSED ACTION AND ALTERNATIVES.....</b>	<b>2-1</b>
<b>2.1 PROPOSED ACTION.....</b>	<b>2-1</b>
<b>2.2 SELECTION STANDARDS .....</b>	<b>2-1</b>
<b>2.3 DETAILED DESCRIPTION OF THE ALTERNATIVES.....</b>	<b>2-2</b>
2.3.1 Proposed Action (Preferred Alternative) .....	2-2
2.3.2 No Action Alternative .....	2-4
<b>2.4 ALTERNATIVES CONSIDERED BUT ELIMINATED FROM DETAILED ANALYSIS.....</b>	<b>2-5</b>
2.4.1 Facility Placement Southeast of Golf Course.....	2-5
2.4.2 Facility Placement within Manzano Area .....	2-5
2.4.3 Facility Placement Near Southern Boundary .....	2-5
<b>2.5 COMPARATIVE SUMMARY OF IMPACTS .....</b>	<b>2-5</b>
<b>3.0 REFERENCES.....</b>	<b>3-1</b>

## APPENDICES

- A. Interagency and Intergovernmental Coordination for Environmental Planning and Public Involvement Materials**

## LIST OF FIGURES

Figure 1-1. Kirtland AFB Vicinity Map with Land Ownership and Withdrawn Areas .....	1-2
Figure 2-1. Location of the Proposed REVIL Facilities .....	2-3

## LIST OF TABLES

Table 2-1. Summary of Potential Impacts.....	2-6
--	-----

***THIS PAGE INTENTIONALLY LEFT BLANK.***

---

---

## **1.0 PURPOSE AND NEED FOR ACTION**

---

---

### **1.1 INTRODUCTION**

Kirtland Air Force Base (AFB), located southeast of the city of Albuquerque in New Mexico (see **Figure 1-1**), is home to the 377th Air Base Wing (377 ABW) of the Air Force Global Strike Command (AFGSC). The installation is a center for research, development, and testing of nonconventional weapons, space and missile technology, and laser warfare. The 377 ABW ensures readiness and training of airmen for worldwide duty, operates the airfield for present and future United States Air Force (USAF) operations, and prepares personnel to deploy worldwide on a moment's notice. The installation encompasses 51,585 acres, of which 44,052 acres are under USAF control (KAFB 2012).

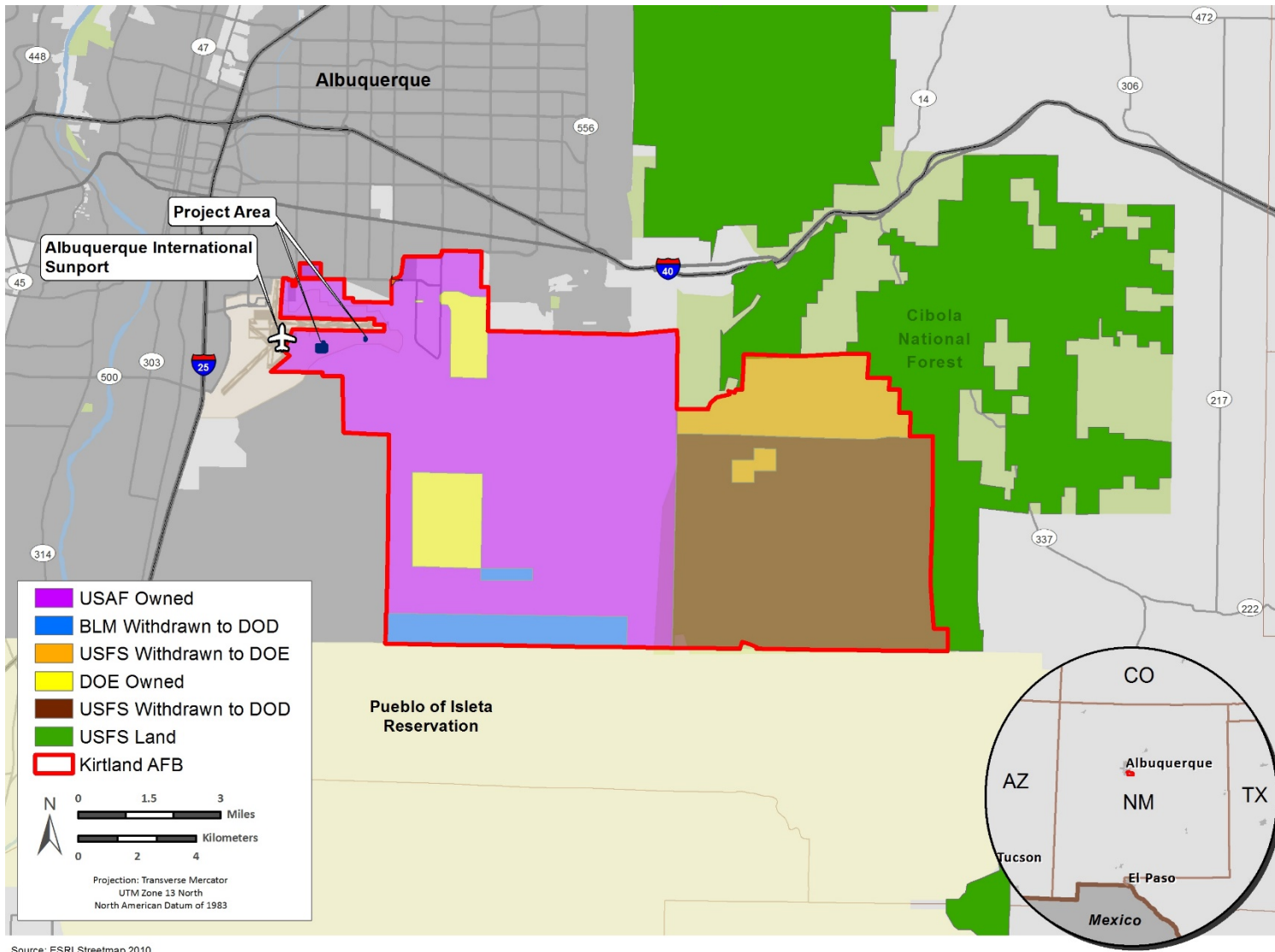
This Description of the Proposed Action and Alternatives (DOPAA) supports a proposal by the Air Force Research Laboratory (AFRL) of the Air Force Materiel Command (AFMC), a tenant unit at Kirtland AFB, to construct and operate Re-entry Vehicle Integration Laboratory (REVIL) facilities at Kirtland AFB (the Proposed Action). This would be accomplished through the construction of two new facilities and the renovation of one storage facility totaling up to 12,000 square feet. The REVIL would consist of an Operating Facility, Radiographic Testing Facility, and Storage Facility. The Storage Facility would be located within the 750 Igloo Area, which is an existing munitions storage area northeast of the proposed Operating and Radiographic Testing facilities. In addition, because of potential hazards, a 300-foot clear zone would be required around the facility. This 300-foot clear zone is for the storage of explosives only as no fissile materials would be handled. The REVIL would provide nuclear research, development, test, evaluation, and system integration; capabilities for new USAF nuclear programs; and leverage existing cross directorate AFRL and Department of Energy (DOE) facilities. Construction of the REVIL is planned for fiscal years (FYs) 2022 through 2024.

### **1.2 PURPOSE OF THE PROPOSED ACTION**

The purpose of the Proposed Action is to construct and operate the facilities required to achieve USAF Nuclear Systems Integrator Capability. The REVIL would (1) support the Department of Defense (DOD) and DOE mission partners through nuclear system design and integration capabilities; (2) perform design, integration, packaging, and assembly activities on development, qualification, and certification test units; and (3) provide subject matter expertise for assessing nuclear science and technology.

### **1.3 NEED FOR THE PROPOSED ACTION**

The need for the Proposed Action is to (1) establish USAF as an active participant in the development of nuclear systems; (2) create an internal research base for USAF nuclear skills development; (3) generate informed technical expertise for the Air Force Nuclear Weapons Center and AFGSC nuclear science and technology; and (4) open cross organizational (DOD/DOE) collaboration on nuclear design. AFRL does not have adequate secured facilities to meet current and future threats to the nuclear capabilities in the United States. Because of this, AFRL is undergoing rapid programmatic, funding, and manning increases to meet growing demands for nuclear research, development, test, and evaluation investments.



**Figure 1-1. Kirtland AFB Vicinity Map with Land Ownership and Withdrawn Areas**



## 1.4 DECISION TO BE MADE

The Environmental Assessment (EA) will evaluate whether the Proposed Action would result in significant impacts on the human environment. If significant impacts are identified, Kirtland AFB would undertake mitigation to reduce impacts to below the level of significance, undertake the preparation of an Environmental Impact Statement (EIS) addressing the Proposed Action, or abandon the Proposed Action. The EA is a planning and decision-making tool that will be used to guide Kirtland AFB in implementing the Proposed Action in a manner that complies with all applicable federal, state, and local environmental laws and regulations and is consistent with USAF standards for environmental stewardship. It is prepared in accordance with the National Environmental Policy Act of 1969 (NEPA) (42 United States Code [USC] 4331 et seq.), the regulations of the President's Council on Environmental Quality (CEQ) that implement NEPA procedures (40 Code of Federal Regulations [CFR] 1500–1508), and the Air Force Environmental Impact Analysis Process (EIAP) Regulations at 32 CFR Part 989.

## 1.5 INTERGOVERNMENTAL COORDINATION / CONSULTATIONS

### 1.5.1 Interagency and Intergovernmental Coordination and Consultations

Executive Order (EO) 12372, *Intergovernmental Review of Federal Programs*, as amended by EO 12416, requires federal agencies to provide opportunities for consultation by elected officials of state and local governments that would be directly affected by a federal proposal. In compliance with NEPA, USAF will notify relevant stakeholders about the Proposed Action and alternatives (see **Appendix A** for all stakeholder coordination materials). The notification process will provide these stakeholders the opportunity to cooperate with USAF and provide comments on the Proposed Action and alternatives.

Per the requirements of Section 106 of the National Historic Preservation Act (NHPA) and implementing regulations (36 CFR Part 800), Section 7 of the Endangered Species Act (ESA) and implementing regulations (50 CFR Part 17) including the Migratory Bird Treaty Act (MBTA), findings of effect and a request for concurrence will be transmitted to the State Historic Preservation Officer (SHPO) and the United States Fish and Wildlife Service (USFWS). A brief summary of comments received is shown below. All correspondence with SHPO and USFWS will be included in **Appendix A**. Correspondence regarding the findings, concurrence, and resolution of any adverse effect will also be included in **Appendix A**.

### 1.5.2 Government to Government Coordination and Consultations

EO 13175, *Consultation and Coordination with Indian Tribal Governments* directs federal agencies to coordinate and consult with Native American tribal governments whose interests may be directly and substantially affected by activities on federally administered lands. To comply with legal mandates, federally recognized tribes that are historically affiliated with the geographic region will be invited to consult on all proposed undertakings that have a potential to affect properties of cultural, historical, or religious significance to the tribes (see **Appendix A** for all tribal coordination materials).

Scoping letters will be provided to Native American tribes whose ancestors were historically affiliated with the land underlying Kirtland AFB, inviting them to consult on the proposed undertakings outlined within the EA.

## 1.6 PUBLIC AND AGENCY REVIEW OF DRAFT EA

A Notice of Availability (NOA) for the Draft EA will be published in *The Albuquerque Journal* announcing the availability of the Draft EA. Letters will be provided to relevant federal, state, and local agencies and Native American tribal governments informing them that the Draft EA is available for review. The publication of the NOA will initiate a 30-day comment period. If open, a copy of the Draft EA will be made available for review at the San Pedro Public Library at 5600 Trumbull Avenue SE, Albuquerque, New Mexico 87108. A copy of the Draft EA will also be made available for review online at <http://www.kirtland.af.mil> under the Environment Information tab. At the closing of the public review period, applicable comments from the general public and interagency and intergovernmental coordination/consultation will be incorporated into the analysis of potential environmental impacts performed as part of the EA, where applicable, and included in **Appendix A** of the Final EA.

---

---

## **2.0 DESCRIPTION OF THE PROPOSED ACTION AND ALTERNATIVES**

---

---

### **2.1 PROPOSED ACTION**

USAF and AFRL propose to construct and operate the REVIL to satisfy the purpose of and need for the Proposed Action as described in **Sections 1.2 and 1.3**.

### **2.2 SELECTION STANDARDS**

Selection standards were developed to assist USAF in determining reasonable alternatives and the basis for eliminating any of them. The following selection standards were used to determine the feasibility of each alternative and to determine which of the alternatives would be the best fit to meet the needs of the project:

- The site should be secure.
- The site should be 300 feet or greater away from sensitive receptors.
- The site should be within an acceptable distance of the existing explosive storage facility.
- The site should be able to use existing utility lines.
- The site should be easily accessible by vehicle and semi-tractor trailers.
- The site should not have limiting topographic features or stormwater drainage concerns.
- The site should not be within a wetland or floodplain.
- The site must be on lands owned by USAF on Kirtland AFB.
- The site should not be in or adjacent to Accident Potential Zones.
- The site should not be in an area that could have significant adverse impacts on children or minorities.
- The site should not be in an area that would destroy or compromise historic buildings/structures or negatively impact cultural viewsheds.
- Prior to selection, the proposed site would be evaluated to determine if cultural resources exist in the area. If a site is chosen where cultural resources are known to occur and the footprint of the proposed project area cannot be adjusted to avoid impacting the resource, then consultation with the SHPO and applicable Tribal Historic Preservation Officers (THPOs) shall occur, and mitigation measures shall be developed in accordance with Section 106 of the NHPA.
- Prior to selection, the proposed site would be surveyed by a qualified biologist for the presence of habitat for federally and state-protected species, as well as nesting birds protected under the MBTA.
- Prior to selection, the Base Weapons Safety Office should be consulted to ensure that the proposed project area is not impacted by Explosive Safety Quantity Distance Arcs or within explosive danger zones.
- Prior to selection, the site should be inspected for hazardous waste and unexploded ordnance (UXO). Site selection should be coordinated with the Kirtland AFB Environmental Restoration Program to avoid siting in areas that contain hazardous waste or UXO.

## 2.3 DETAILED DESCRIPTION OF THE ALTERNATIVES

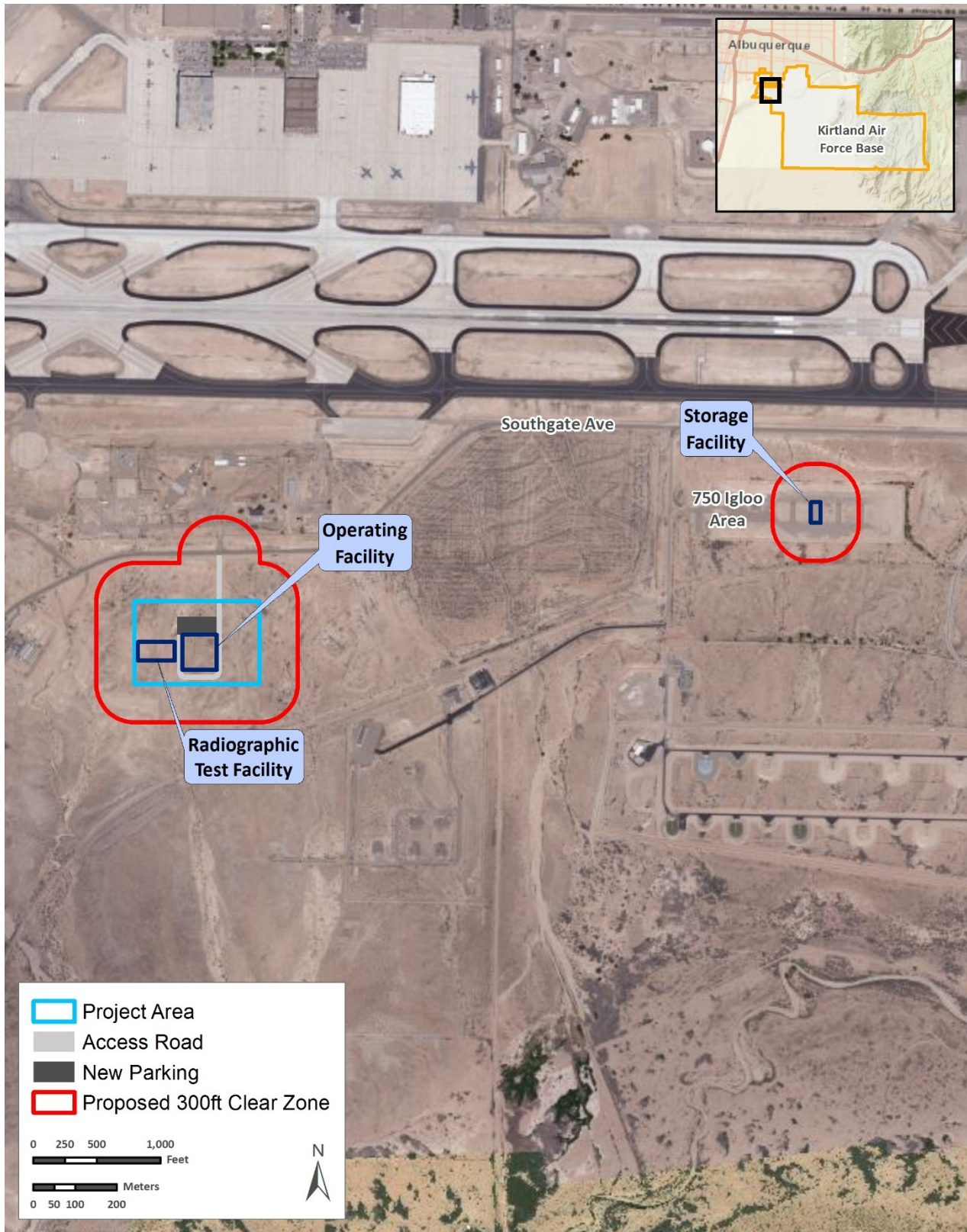
### 2.3.1 Proposed Action (Preferred Alternative)

USAF proposes to construct and operate the REVIL to achieve USAF Nuclear Systems Integrator Capability. This would be accomplished through the construction of two new facilities and the renovation of one storage facility totaling approximately 12,000 square feet on Kirtland AFB. The REVIL would provide the essential capabilities to reconstitute USAF nuclear research capabilities and would consist of an Operating Facility, Radiographic Test Facility, Storage Facility, associated access roads, and a parking area (see **Figure 2-1**). These new facilities would be constructed according to the latest energy standards for utility conservation and resilience.

The proposed project area for the Operating and Radiographic Testing facilities would be collocated approximately 700 feet south of Southgate Avenue and 3,700 feet west of Ammo Road and the Storage Facility would be located approximately 550 feet south of Southgate Avenue and 1,300 feet east of Ammo Road in the 750 Igloo Area. It should be noted that the location of the Radiographic Testing Facility may change slightly; however, the entire project area will be analyzed for impacts. At this location, the REVIL facilities would be approximately 1,000 feet from the nearest inhabited building. Building construction would comply with minimum intraline and intermagazine distances of 120 and 40 feet, respectively, for the Operating and Radiographic Testing facilities and 143 and 48 feet, respectively, for the Storage Facility in the 750 Igloo Area. Stormwater control protocols would be followed both during construction and for long-term maintenance. In addition, most existing utility lines occur adjacent to the proposed project area; therefore, only connection lines and communication infrastructure would need to be installed. The proposed project area is within a low traffic area and the access roads are in good condition and could handle semi-tractor trailer traffic. Direct access roads to the REVIL facilities and parking areas would be paved under the Proposed Action.

The Operating Facility would total approximately 8,000 square feet and include a secure 4,800 square foot high-bay laboratory for vehicle integration, staging, and tear-down; compartmentalized laboratory spaces for hosting multiple programs concurrently; expansive network capabilities spanning all DOD and DOE classifications; dedicated electronics laboratory for testing/calibration of sensitive components; and be compliant for the handling of high explosives (HEs), radiological material, and beryllium. The high-bay laboratory would contain a 5-ton crane, a maximum of 300 pounds of net explosive weight (NEW) material, beryllium storage and component integration, radiological material storage and integration (low specific activity [LSA] materials), access-controlled loading docks, and a lightning protection system. Activities occurring at the Operating Facility would include design and development of novel nuclear components and subsystems; integration and assembly of nuclear flight test units, mock-ups, and demolition units; joint DOD/DOE nuclear packaging exercises; and test planning, requirements management, metrology, and instrumentation.

The Radiographic Test Facility would include a 3,000 square foot secure facility designed for assembled pre- and post-test re-entry bodies and would be collocated with the Operating Facility. Activities occurring at the Radiographic Test Facility would include radiographic testing as required to execute weapon system development, certification, and qualification activities, which would uphold safety, assembly integrity, pre- and post-test assembly fidelity, and development of assembly criteria, as well as include additional radiographic testing as required by partnered AFRL programs.



Data Source: Bing Maps Aerial

**Figure 2-1. Location of the Proposed REvil Facilities**

The Storage Facility would be located within the 750 Igloo Area, which is less than 1 mile from the Operating Facility. It would include an 888 square foot secure storage space in Igloo 753 for classified material and be pre-approved for siting/storage of explosive materials. The facility would be constructed 300 feet away from any sensitive receptors as is required. A key feature of the Storage Facility would include external storage necessary for containment of units during extended efforts involving HE materials which in turn would create storage for up to 500 pounds of NEW and uphold safety by minimizing NEW storage in the Operating Facility at any given time. All hazardous materials and wastes would be stored and disposed of in accordance with all federal, state, and local regulations. Renovations to Igloo 753 would include replacing security doors on the front of the building and adding an alarm system.

Construction of the REVIL could result in approximately 3.5 acres of ground disturbance, approximately 2.5 acres of new pavement and concrete construction for the access road and parking area, and approximately 11,112 square feet (approximately 0.25 acres) of new building construction. Therefore, the Proposed Action would result in an increase of approximately 2.75 acres of impervious surfaces in the project area.

The REVIL would send and receive materials, components, and subassemblies to and from both DOE and DOD. Incoming and outgoing shipments could include Nuclear Explosive Like Assemblies (NELA), requiring specific transport provisions for security. Hazardous materials that would be handled in the REVIL would include radiological materials, beryllium components, and HEs.

Nuclear components and subsystems would not have fissile materials but would contain LSA accountable nuclear materials such as depleted uranium (DU). There would be no machining or abrading of DU. In DOE space, this requires a radiological facility. In addition, some nuclear subassemblies could contain beryllium parts. No machining or abrading of beryllium is planned. Finally, there would be no assembly of HE components at the detail HE level. Assemblies and sub-systems received from DOE or DOD containing HE would be integrated into higher level USAF systems or disassembled after flight tests. Joint Test Assembly (JTA)/flight test assemblies often contain live detonations. Facility lightning protection system for HE operations would be required. The REVIL would also handle and integrate various hazardous components including but not limited to fire sets, batteries, and low energy electro-explosive devices (LEEEDs).

### **2.3.2 No Action Alternative**

Under the No Action Alternative, the REVIL would not be constructed and AFRL would not achieve USAF Nuclear Systems Integrator Capability. The No Action Alternative would maintain the current outdated state of AFRL's nuclear system design and development capabilities. AFRL would be unable to meet increasing demands for nuclear research, development, test, and evaluation investments. Currently, secure laboratories/facilities are not available for data analysis, modeling and simulation, nuclear systems integration, and support critical research for nuclear deterrence operations.

The No Action Alternative would not meet the purpose of or need for the Proposed Action as described in **Section 1.3**; however, the USAF EIAP (32 CFR § 989.8[d]) requires consideration of the No Action Alternative. Therefore, the No Action Alternative will be carried forward for detailed analysis in the EA.

## **2.4 ALTERNATIVES CONSIDERED BUT ELIMINATED FROM DETAILED ANALYSIS**

The following alternatives were eliminated from further consideration based on the selection standards outlined in **Section 2.2** and other reasons as explained below.

### **2.4.1 Facility Placement Southeast of Golf Course**

This alternative would have placed the REVIL approximately 1 mile southeast of the Tijeras Arroyo Golf Course. The access road, Pennsylvania Street, is in good condition to handle semi-tractor trailers and the location would have direct access to primary transportation corridors for installation entry and exit points. However, this alternative is not being carried forward for detailed analysis because it does not meet some of the selection standards. The location lacks existing explosive storage, with the closest facility being approximately 3 miles from the proposed location. There are also significant concerns regarding its proximity to Pennsylvania Street, a highly traveled road. In addition, neighboring facilities expressed concerns over their collocation with explosives. Proximity to neighboring facilities also causes security concerns. Additionally, capacity of utilities and connection points were less clear at this location.

### **2.4.2 Facility Placement within Manzano Area**

This alternative would have placed the REVIL within the Manzano Area in the central portion of the installation in the foothills of the Manzano Mountains. This location would fall within a low traffic area. The access road is a tertiary road only used by those attempting to access the storage facilities in the Manzano Complex. However, this alternative was not considered because it did not meet some of the selection standards. The closest storage facility is approximately 2.5 miles away. The location provides an indirect, winding route to installation entry and exit points, which is also a concern. There are significant issues regarding utility access with the closest utilities up to 2,000 feet away, which would require a significant investment. In addition, the road used to access the location is not optimal and would need significant repairs to accommodate large vehicles such as semi-tractor trailers. Therefore, this alternative was deemed cost prohibitive.

### **2.4.3 Facility Placement Near Southern Boundary**

This alternative would have placed the REVIL near the southern boundary of the installation. The access road, Lovelace Road, is remote, but is a secondary traffic corridor to the facilities on the southern portion of the installation and has low traffic. However, this alternative was not considered because it did not meet some of the selection standards. There are no nearby options available for explosives storage. Although the condition of the roads could handle large vehicles, they would need to be evaluated to verify this. Proximity to the southernmost installation boundary also poses a security concern because the site is isolated and not near any installation entry or exit points. Combining the extended response time to any security incidents (due to the site location) with nuclear componentry would not meet the needs of the Proposed Action. The location was too distant from existing infrastructure to be considered.

## **2.5 COMPARATIVE SUMMARY OF IMPACTS**

The table below presents a summary of the impacts anticipated under the Proposed Action and No Action Alternative.

**Table 2-1. Summary of Potential Impacts**

Affected Resource	Proposed Action – Preferred Action	No Action Alternative
Airspace Management		
Noise		
Land Use		
Visual Resources		
Air Quality		
Geology and Soils		
Water Resources		
Biological Resources		
Cultural Resources		
Infrastructure		
Hazardous Materials and Wastes		
Safety		
Socioeconomics		
Environmental Justice and Sensitive Receptors		

**[[Preparer’s Note: Summary of potential impacts will be complete in the Preliminary Draft EA. Resource areas will be analyzed and could be eliminated from detailed analysis in the Preliminary Draft EA.]]**



---

---

### 3.0 REFERENCES

---

---

KAFB 2012      Kirtland Air Force Base (KAFB). 2012. *Kirtland Air Force Base Real Estate Management Existing Facilities*.

***THIS PAGE INTENTIONALLY LEFT BLANK.***

---

**APPENDIX A  
INTERAGENCY AND INTERGOVERNMENTAL COORDINATION  
FOR ENVIRONMENTAL PLANNING AND  
PUBLIC INVOLVEMENT MATERIALS**

---



# Appendix A

## Interagency and Intergovernmental Coordination for Environmental Planning and Public Involvement Materials

---

The 377th Air Base Wing (377 ABW) solicited comments on the Description of the Proposed Action and Alternatives (DOPAA) by distributing letters (examples follow) to potentially interested federal, state, and local agencies; Native American tribes; and other stakeholder groups or individuals. The following is a list of potentially interested parties:

### **Federal, State, and Local Agencies – Scoping Letter**

Senator Martin Heinrich  
U.S. Senate  
303 Hart Senate Office Building  
Washington DC 20510

Commissioners  
Bernalillo County Board of Commissioners  
One Civic Plaza NW, 10th Floor  
Albuquerque NM 87102

Senator Ben Ray Luján  
U.S. Senate  
Dirksen Senate Building, Suite B40C  
Washington DC 20510

Councilmember  
Albuquerque City Councilmembers  
PO Box 1293  
Albuquerque NM 87103

Representative Yvette Herrell  
U.S. House of Representatives  
1305 Longworth House Office Building  
Washington DC 20515

Ms. Amy Lueders  
Southwest Regional Director  
U.S. Fish & Wildlife Service, Southwest  
Regional Office  
PO Box 1306  
Albuquerque NM 87103-1306

Representative Debra Haaland  
U.S. House of Representatives  
1421 Longworth House Office Building  
Washington, DC 20515

Mr. Matt Wunder  
Chief  
New Mexico Department of Game and Fish  
Conservation Services  
PO Box 25112  
Santa Fe NM 87504

Representative Teresa Leger Fernandez  
U.S. House of Representatives  
1432 Longworth House Office Building  
Washington DC 20515

Ms. Stephanie Garcia Richard  
Commissioner of Public Lands  
New Mexico State Land Office  
310 Old Santa Fe Trail  
Santa Fe NM 87501

Mr. Rob Lowe  
Regional Administrator,  
Federal Aviation Administration, Southwest  
Region  
10101 Hillwood Parkway  
Fort Worth TX 76177-1524

Ms. Sarah Cottrell Propst  
Cabinet Secretary-Designate  
New Mexico Energy, Minerals and Natural  
Resources Department  
1220 South St Francis Drive  
Santa Fe NM 87505

Martin Meairs  
District Conservationist  
National Resources Conservation Service  
Los Lunas Service Center  
2600 Palmilla Road  
Los Lunas NM 87031

Board of Directors  
Mid Region Council of Governments  
809 Copper Avenue NW  
Albuquerque NM 87102

Mr. Jeff M. Witte  
Director/Secretary  
New Mexico Department of Agriculture  
MSC 3189, Box 30005  
Las Cruces NM 88003

Mr. James C. Kenney  
Cabinet Secretary  
New Mexico Environment Department  
Office of General Counsel & Environmental  
Policy  
PO Box 5469  
Santa Fe NM 87502-5469

Ms. Julie Morgas Baca  
Bernalillo County Manager  
Bernalillo County Manager's Office  
One Civic Plaza NW, 10th Floor  
Albuquerque NM 87102

Mr. Matthew Ross  
Director of Communications  
City of Albuquerque Office of the Mayor  
PO Box 1293  
Albuquerque NM 87103

Dr. Jeff Pappas, PhD  
State Historic Preservation Officer and  
Director  
New Mexico Historic Preservation Division  
Department of Cultural Affairs  
Bataan Memorial Building  
407 Galisteo Street, Suite 236  
Santa Fe NM 87501

Mr. Steve Vierck  
Assistant Commissioner for Commercial  
Resources  
New Mexico State Land Office  
PO Box 1148  
Santa Fe NM 87504

Development Manager/Department  
Director  
Bernalillo County Planning Section  
111 Union Square SE, Suite 100  
Albuquerque NM 87102

Mr. Brennon Williams  
Director  
City of Albuquerque Planning Department  
PO Box 1293  
Albuquerque NM 87103

Ms. Patricia Mattingly  
Acting Regional Director and Regional  
Environmental Specialist  
Bureau of Indian Affairs, Southwest  
Regional Office  
1001 Indian School Road NW  
Albuquerque NM 87104

Mr. Mark Matthews  
Acting District Manager  
Bureau of Land Management, Albuquerque  
District Office  
100 Sun Avenue NE Pan American  
Building, Suite 330  
Albuquerque NM 87109

Ms. Susan King  
Regional Environmental Officer  
U.S. Department of Interior, Office of  
Environmental Policy and Compliance,  
Albuquerque Region  
1001 Indian School Road NW, Suite 348  
Albuquerque NM 87104

Mr. George MacDonell  
Chief of Environmental Resources Section  
USACE Albuquerque District  
4101 Jefferson Plaza NE  
Albuquerque NM 87109

Mr. David Gray  
Acting Regional Administrator  
U.S. Environmental Protection Agency,  
Region 6  
1201 Elm Street, Suite 500  
Dallas TX 75270

Ms. Cheryl Prewitt  
Regional Environmental Coordinator  
U.S. Forest Service, Southwest Region  
333 Broadway Boulevard SE  
Albuquerque NM 87102

Ms. Jessica Small  
Department of Energy/National Nuclear  
Security Administration, Sandia Field  
Office  
PO Box 5400  
Albuquerque NM 87187

Mr. John Weckerle  
Department of Energy/National Nuclear  
Security Administration, Office of General  
Counsel  
PO Box 5400  
Albuquerque NM 87187

**[[Preparer's Note: Representative Debra Haaland's replacement to be added once determined.]]**

## Example Federal, State, and Local Agency Scoping Letter



### **DEPARTMENT OF THE AIR FORCE 377TH AIR BASE WING (AFGSC)**

Colonel David S. Miller, USAF  
Commander  
377th Air Base Wing  
2000 Wyoming Blvd SE  
Kirtland Air Force Base NM 87117

Ms. Danita Burns, District Manager  
Bureau of Land Management  
Albuquerque District Office  
100 Sun Avenue NE  
Pan American Building, Suite 330  
Albuquerque NM 87109-4676

Dear Ms. Burns

In accordance with the National Environmental Policy Act (NEPA) of 1969, the Council on Environmental Quality (CEQ) regulations, and the United States Air Force (USAF) NEPA regulations, the USAF is preparing an Environmental Assessment (EA) to address the potential environmental impacts associated with the construction and operation of Re-entry Vehicle Integration Laboratory (REVIL) facilities for the Air Force Research Laboratory (AFRL) at Kirtland Air Force Base (AFB), New Mexico. The Proposed Action would construct secure facilities totaling up to approximately 12,000 square feet consisting of an Operating Facility, Radiographic Test Facility, and Storage Facility. The Storage Facility is proposed to be collocated within the 750 Igloo Area, which is northeast of the proposed Operating and Radiographic Testing facilities.

The purpose of the Proposed Action is to construct and operate the facilities required to achieve USAF Nuclear Systems Integrator Capability. The REVIL would (1) support the Department of Defense (DOD) and Department of Energy (DOE) mission partners through nuclear system design and integration capabilities; (2) perform design, integration, packaging, and assembly activities on development, qualification and certification test units; and (3) provide subject matter expertise for assessing nuclear science and technology. The need for the Proposed Action is to (1) establish USAF as an active participant in the development of nuclear systems; (2) create an internal research base for USAF nuclear skills development; (3) generate informed technical expertise for the Air Force Nuclear Weapons Center and Air Force Global Strike Command nuclear science and technology; and (4) open cross organizational (DOD/DOE) collaboration on nuclear design. AFRL does not have adequate secured facilities to meet current and future threats to the nuclear capabilities in the United States. Because of this, AFRL is undergoing rapid programmatic, funding, and manning increases to meet growing demands for nuclear research, development, test, and evaluation investments.

If you have additional information regarding impacts of the Proposed Action on the natural environment or other environmental aspects of which we are unaware, we would appreciate



receiving such information for inclusion and consideration during the NEPA compliance process. A copy of the Final Description of the Proposed Action and Alternatives for the EA Addressing Construction and Operation of Re-Entry Vehicle Integration Laboratory Facilities at Kirtland AFB, New Mexico is available at <http://www.kirtland.af.mil> by clicking the “Environment” button at the bottom of the webpage. We look forward to and welcome your participation in this process. Please respond within 30 days of receipt of this letter to ensure your concerns are adequately addressed in the EA.

Please send your written responses to the NEPA Program Manager, 377 MSG/CEIEC, 2050 Wyoming Boulevard SE, Suite 116, Kirtland AFB NM 87117, or via email to [KirtlandNEPA@us.af.mil](mailto:KirtlandNEPA@us.af.mil).

Sincerely

DAVID S. MILLER, Colonel, USAF  
Commander

Attachment:  
Proposed Location of REVIL Facilities

## **Native American Tribes – Scoping Letters**

Pueblo of Acoma  
Governor Brian D. Vallo  
PO Box 309  
Acoma NM 87034

Pueblo of Cochiti  
Governor Joseph L. Herrera  
PO Box 70  
Cochiti Pueblo NM 87072

Hopi Tribal Council  
Chairman Timothy L. Nuvangyaoma  
PO Box 123  
Kykotsmovi AZ 86039

Pueblo of Isleta  
Governor Vernon B. Abeita  
PO Box 1270  
Isleta NM 87022

Pueblo of Jemez  
Governor Michael Toledo, Jr.  
PO Box 100  
Jemez Pueblo NM 87024

Jicarilla Apache Nation  
President Edward Velarde  
PO Box 507  
Dulce NM 87528

Pueblo of Laguna  
Governor John E. Antonio  
PO Box 194  
Laguna Pueblo NM 87026

Mescalero Apache Tribe of the Mescalero  
Apache Reservation  
President Gabe Aguilar  
PO Box 227  
Mescalero NM 88340

Pueblo of Nambe  
Governor Phillip A. Perez  
15A NP 102 West  
Santa Fe NM 87506

Navajo Nation  
President Jonathan Nez  
PO Box 7440  
Window Rock AZ 86515

Ohkay Owingeh Pueblo  
Governor Patrick Aguino  
PO Box 1099  
San Juan Pueblo NM 87566

Pueblo of Picuris  
Governor Craig Quanchello  
PO Box 127  
Peñasco NM 87553

Pueblo of Pojoaque  
Governor Joseph M. Talachy  
78 Cities of Gold Road  
Santa Fe NM 87506

Pueblo of Sandia  
Governor Stuart Paisano  
481 Sandia Loop  
Bernalillo NM 87004

Pueblo of San Felipe  
Governor Anthony Ortiz  
PO Box 4339  
San Felipe Pueblo NM 87001

Pueblo of San Ildefonso  
Governor Christopher Moquino  
02 Tunyo Po  
Santa Fe NM 87506

Pueblo of Santa Ana  
Governor Ulysses Leon  
2 Dove Road  
Santa Ana Pueblo NM 87004

Pueblo of Santa Clara  
Governor J. Michael Chavarria  
PO Box 580  
Española NM 87532

Pueblo of Santo Domingo  
Governor Sidelio Tenorio  
PO Box 99  
Santo Domingo Pueblo NM 87052

Pueblo of Taos  
Governor Clyde M. Romero, Sr.  
PO Box 1846  
Taos NM 87571

Pueblo of Tesuque  
Governor Mark Mitchell  
02 TP828  
Santa Fe NM 87506

White Mountain Apache Tribe  
Tribal Chairwoman Gwendena Lee-  
Gatewood  
PO Box 700  
Whiteriver AZ 85941

Ysleta del Sur Pueblo  
Governor E. Michael Silvas  
117 Old Pueblo Road, PO Box 17579  
El Paso TX 79907

Pueblo of Zia  
Governor Jerome Lucero  
135 Capitol Square Drive  
Zia Pueblo NM 87053-6013

Pueblo of Zuni  
Governor Val R. Panteah, Sr.  
PO Box 339  
Zuni NM 87327

Fort Sill Apache Tribe of Oklahoma  
Chairwoman Lori Gooday-Ware  
43187 U.S. Highway 281  
Apache OK 73006

Ute Mountain Ute Tribe  
Chairman Manuel Heart  
124 Mike Wash Road  
Towaoc CO 81334

Apache Tribe of Oklahoma  
Chairman Bobby Komardley  
PO Box 1330  
Anadarko OK 73005

Kiowa Tribe of Oklahoma  
Chairman Matthew Komalty  
PO Box 369  
Carnegie OK 73015

Comanche Nation of Oklahoma  
Chairman William Nelson, Sr.  
PO Box 908  
Lawton OK 73502

Pawnee Nation of Oklahoma  
President Jimmy Whiteshirt  
PO Box 470  
Pawnee OK 74058

San Carlos Apache Tribe  
Chairman Terry Rambler  
PO Box 0  
San Carlos AZ 85550

Southern Ute Indian Tribe  
Chairwoman Christine Sage  
PO Box 737  
Ignacio CO 81137

Wichita & Affiliated Tribes  
President Terri Parton  
Wichita Executive Committee  
PO Box 729  
Anadarko OK 73005

## Example Tribal Government Scoping Letter



### DEPARTMENT OF THE AIR FORCE 377TH AIR BASE WING (AFGSC)

Colonel David S. Miller, USAF  
Commander  
377th Air Base Wing  
2000 Wyoming Blvd SE  
Kirtland Air Force Base NM 87117

Governor E. Michael Silvas  
Ysleta del Sur Pueblo  
117 S Old Pueblo Road  
PO Box 17579  
El Paso TX 79907

Dear Governor Silvas

In accordance with the National Environmental Policy Act (NEPA) of 1969, the Council on Environmental Quality (CEQ) regulations, and the United States Air Force (USAF) NEPA regulations, the USAF is preparing an Environmental Assessment (EA) to address the potential environmental impacts associated with the construction and operation of Re-entry Vehicle Integration Laboratory (REVIL) facilities for the Air Force Research Laboratory (AFRL) at Kirtland Air Force Base (AFB), New Mexico. The Proposed Action would construct secure facilities totaling up to approximately 12,000 square feet consisting of an Operating Facility, Radiographic Test Facility, and Storage Facility. The Storage Facility is proposed to be collected within the 750 Igloo Area, which is northeast of the proposed Operating and Radiographic Testing facilities.

The purpose of the Proposed Action is to construct and operate the facilities required to achieve USAF Nuclear Systems Integrator Capability. The REVIL would (1) support the Department of Defense (DOD) and Department of Energy (DOE) mission partners through nuclear system design and integration capabilities; (2) perform design, integration, packaging, and assembly activities on development, qualification and certification test units; and (3) provide subject matter expertise for assessing nuclear science and technology. The need for the Proposed Action is to (1) establish USAF as an active participant in the development of nuclear systems; (2) create an internal research base for USAF nuclear skills development; (3) generate informed technical expertise for the Air Force Nuclear Weapons Center and Air Force Global Strike Command nuclear science and technology; and (4) open cross organizational (DOD/DOE) collaboration on nuclear design. AFRL does not have adequate secured facilities to meet current and future threats to the nuclear capabilities in the United States. Because of this, AFRL is undergoing rapid programmatic, funding, and manning increases to meet growing demands for nuclear research, development, test, and evaluation investments.

Pursuant to Section 106 of the National Historic Preservation Act (36 Code of Federal Regulations Part 800), the USAF would like to initiate government-to-government consultation to allow you and your designee the opportunity to identify any comments, concerns, and

suggestions relevant to the NEPA compliance process concerning the Proposed Action. A copy of the Final Description of the Proposed Action and Alternatives for the EA Addressing Construction and Operation of Re-Entry Vehicle Integration Laboratory Facilities at Kirtland AFB, New Mexico is available at <http://www.kirtland.af.mil> by clicking the "Environment" button at the bottom of the webpage. For technical information, please contact my NEPA Program Manager, Ms. Martha E. García, directly at (505) 846-6446 or by email [martha.garcia.3@us.af.mil](mailto:martha.garcia.3@us.af.mil) or.

Please contact my office at (505) 846-7377 if you would like to meet to discuss the proposed project or proceed with the Section 106 consultation.

Sincerely

DAVID S. MILLER, Colonel, USAF  
Commander

Attachment:  
Proposed Location of REVIL Facilities

***THIS PAGE INTENTIONALLY LEFT BLANK.***